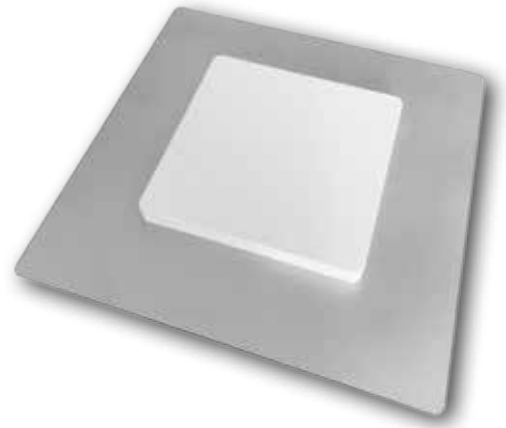


INVENGO INTELLIFI SMARTSPOT FOCUS



About Invengo-Intellifi Smartspot Focus

The Invengo-Intellifi Smartspot Focus enables new and more accurate localization applications in a flash. Combining powerful passive RFID localization with directionality and active Bluetooth Low Energy technology on top of easy to use web based information services. The Smartspot Focus allows for high speed inventories. It supports zone based localization with up to 16 zones by one single unit, ensuring Identification and Localization solutions can be realized smarter and faster than ever before. Technical features like PoE (Power over Ethernet) simplify deployment and dramatically reduce costs by eliminating the need for AC outlet installation.



Invengo – the global RFID technology provider – is a leading developer and manufacturer of high quality, intelligent RAIN RFID and HF/NFC connectivity solutions and consumables (tags & inlays) utilized in the Internet of Things. With a focus on RFID innovation, Invengo has created a leading product line in retail, (industrial) laundry, library, (public) transportation, healthcare, and many other industries.

Invengo Technology Pte. Ltd. (SG) is the International Headquarters of Invengo Information Technology Co. Ltd, listed on Shenzhen Stock Exchange (SZSE: 002161.SZ). Employing over 600 people globally, Invengo is one of the largest publicly traded, RFID / IoT oriented companies in the world.

Features

- Faster inventories - auto focus multi beam antenna
- Simple to use micro zoning
- Plug & play
- Web-API
- Unprecedented affordability - lowest TCO

All features and specifications described are subject to change without notice.

Product Specifications

Communication

Interface	Web services through Intellifi Brain
Data exchange	Json - www.json.org web service API
Ethernet	RJ45 - acces at side and back
Antenna beams	25 x dual linear polarized
Optically isolated GPIO	2x input 5-24V, 2x output max 300mA
Bluetooth	Bluetooth Low Energy,
IBeacon support	Intellifi Smart Beacon support

RAIN RFID (UHF)

Supported Protocols	EPC Global UHF Class1 GEN2, ISO/IEC 18000-63
Frequency	ETSI: 865.6 to 867,6 MHz FCC: 902 to 928 MHz Up to > 10m (tag depending)
Compliance	EN 302208-2
Output Power	11- 36dBm ERP
Chipset	Impinj R2000

BLE Bluetooth Low Energy

Frequency	2.4Ghz
Output Power	up to +8 dBm EIRP

Environmental

Operating temperature	-25°C to 60°C (-13°F to 140°F)
Storage temperature	-40°C to 75°C (-40°F to 167°F)
IP Rating	IP20 (contact us for IP65)

Power Sources

Adapter	12V – 18V
Power over Ethernet	802.3at
Power consumption	7.6W at 27dBm

Physical Parameters

Dimensions	595 x 595 x 75 mm
Weight	5 Kg (11.02lbs)
Mounting	Fits in ceiling tile (100x100mm) & VESA 100

Order Information

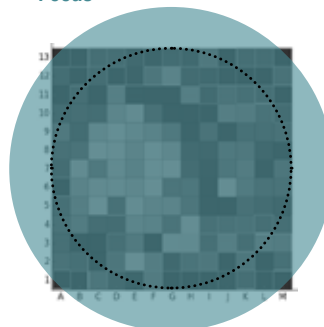
Box Size	650 × 700 × 80 mm (25.59 x 23.62 x 3.15 in)
Weight Box	5,4 kg (11.9 lbs)

Application example

- Tracking and tracing (medical) equipment or instruments
- High density laundry inventories
- Accurate and fast inventories
- Parts tracing and tool tracking
- Fast inventories, tracking and tracing

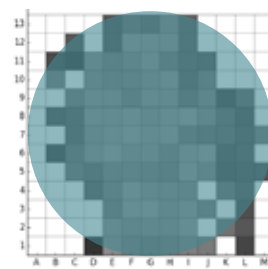
Increases covered area with 50%

Focus



approx. 150m²
(approx. 1500 sq. Ft)

Tile



approx. 100m²
(approx. 1000 sq. Ft)



APAC

Invengo Technology Pte. Ltd
10 Kallang Avenue
#05-15 Tower 2, Aperia
Singapore 339510

Office: +65 6702 3909
sales.apac@invengo.com

Americas

Invengo Technology Corp.
2700-160 Sumner Blvd.
Raleigh, NC 27616
United States of America

Office: +1 919 890 0202
sales.americas@invengo.com

EMEA

Invengo Technologies
180 Voie Ariane – Athélia 1
13600 La Ciotat
France

Office: +33 413 96 1111
sales.emea@invengo.com